

ELESGO CLEAN TOUCH

ELESGO®

ON TOP

3
Release Film

1
EBC Resins

2
Substrate

Surface structure

1 The Elesgo surface is composed out of a primer, a base-coat and a top-coat. First, these are applied to the substrate one after another, then all varnish layers are cured using our patent electron beam curing (EBC) process. EBC grants the surface an extremely long life cycle.

2 The pigmented plain paper oder decoratively printed papers determine the final appearance. Here, we do everything possible to create the Elesgo surface which meets every of your needs and forms a perfect fit for your product. The surfaces can be further processed to high-pressure or continuous-pressure laminates. Additionally, it is possible to process the Elesgo surfaces to compact panels.

3 The pigmented plain paper or decoratively printed papers determine the final appearance. The wafer-thin film can remain as a protective film on the surface until the product is installed. Only then is the top layer simply peeled off. Exactly like this, your Elesgo surface is produced.

made by

DTS

DTS Systemoberflächen GmbH
Arnold-Dammers-Weg 2
39291 Möckern

phone: +49 (0) 39 221 978 - 0
fax: +49 (0) 39 221 978 - 97
email: zentrale@lamine.de

www.lamine.de

„Do you have any questions about **clean touch**? Do not hesitate to contact me!“

Thomas Schmalenstroer
Head of Sales

ELESGO®

clean touch

Elesgo *clean touch*. The surface for special application.

surfacing the future _____

Together we
make anything
possible

Challenge us.

Tailor-made: In addition to our standard colour collection, the *peacock collection*, we design together your customised surface, perfectly fitting your product.

Anything is possible: We design anything possible, from your personal décor to your individual colour collection. We impart your surface design with the durable, optically, and haptically appealing characteristics of an Elesgo surface.

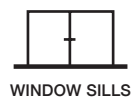
Features

The characteristics form the difference: Due to the composition of the acrylate resin lacquers and the subsequent curing with electron beams, the surface acquires positive characteristics such as an extremely high scratch resistance. Everyday practicality: Elesgo surfaces are dirt-resistant and easy to clean. Not

only our production is environmentally friendly: The entire production is free of solvents and formaldehyde. Electron beam curing is also low-emission and uses little energy.



Area of application

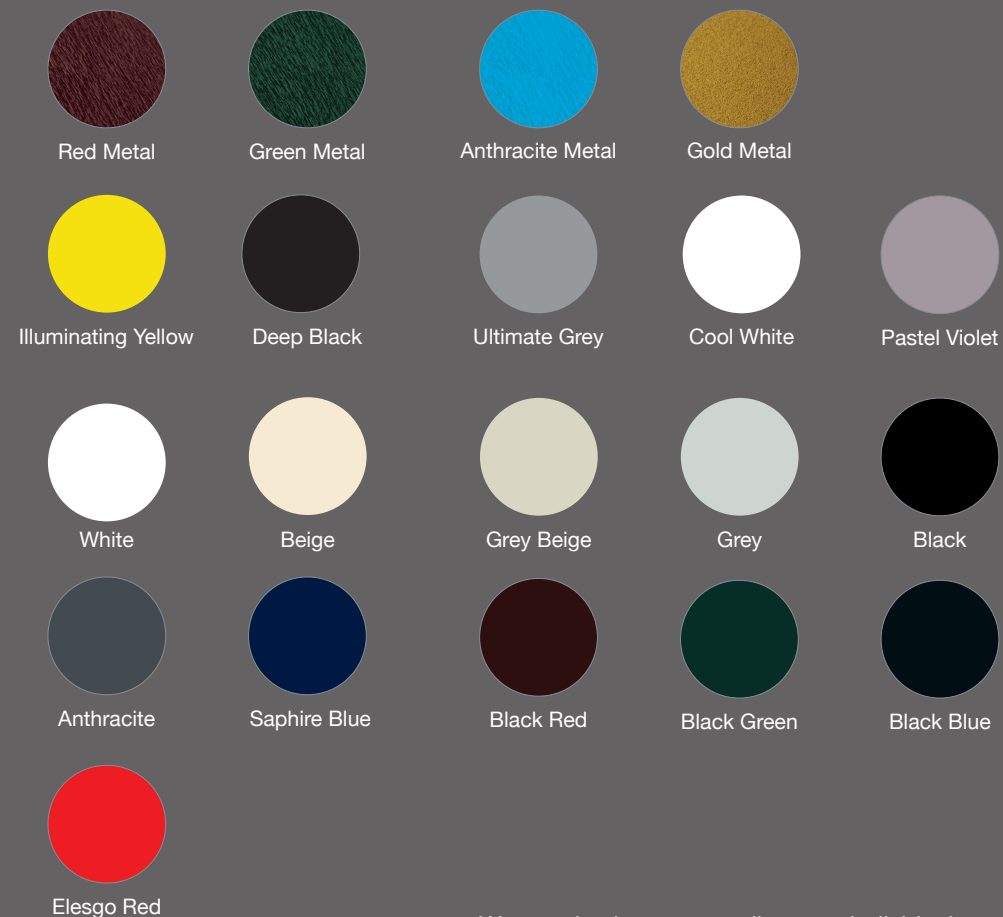


The right surface, just right for your particular application:

Elesgo *clean touch* is used above all where cleanliness is essential. The surface is suitable, for example, for furniture fronts and work surfaces in kitchens, bathrooms, laboratories as well as in the catering trade and public facilities.

Peacock collection

Choose your perfect design from our standard range. The *peacock collection* offers you a choice of 20 different colours and décors. You can order your desired colour or décor from an quantity of 500 sqm.



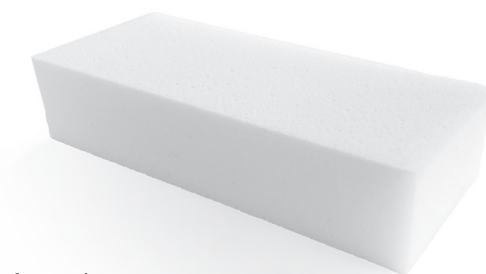
We are also happy to realise your individual colour request, from a minimum order quantity of 5,000 sqm.

Cleanliness at ease

Cleaning the Elesgo *clean touch* surface is incredibly easy. Depending on the degree of soiling, it requires an eraser sponge, detergent, damp, and dry cloth, paper towels, acetone, or methylated spirits.

For cleaning everyday stains such as coffee, tea, oil, butter, wine, pencil, etc., use water, a damp cloth or an eraser sponge and simply wipe the stain away. If the stain has already dried, soak it with a damp cloth for one to two minutes, wipe off - done.

For heavier stains such as ballpoint pens, markers, lipstick, etc., use methylated spirits or acetone, an eraser sponge and paper towels. If the stains have dried up, soak them with a damp cloth for one to two minutes, then simply wipe them off with methylated spirits or acetone - done.



Find more information on our website **laminate.de**.